

# CITY OF MURRAY CONTROL MONUMENT CARD

DESIGNATION: C6 GPS

TYPE: CONCRETE MONUMENT W/ CITY DISK

DATE SET: JUNE 1997 QUAD: MURRAY, KY.

HORIZONTAL DATUM: NAD-83 VERTICAL DATUM: NAVD-88

STATE: KENTUCKY COUNTY: CALLOWAY ZONE: KY. S 1602

NORTHING: 1750750.05 FT

EASTING: 884448.95 FT

ELEVATION: 551.53 FT (GPS)

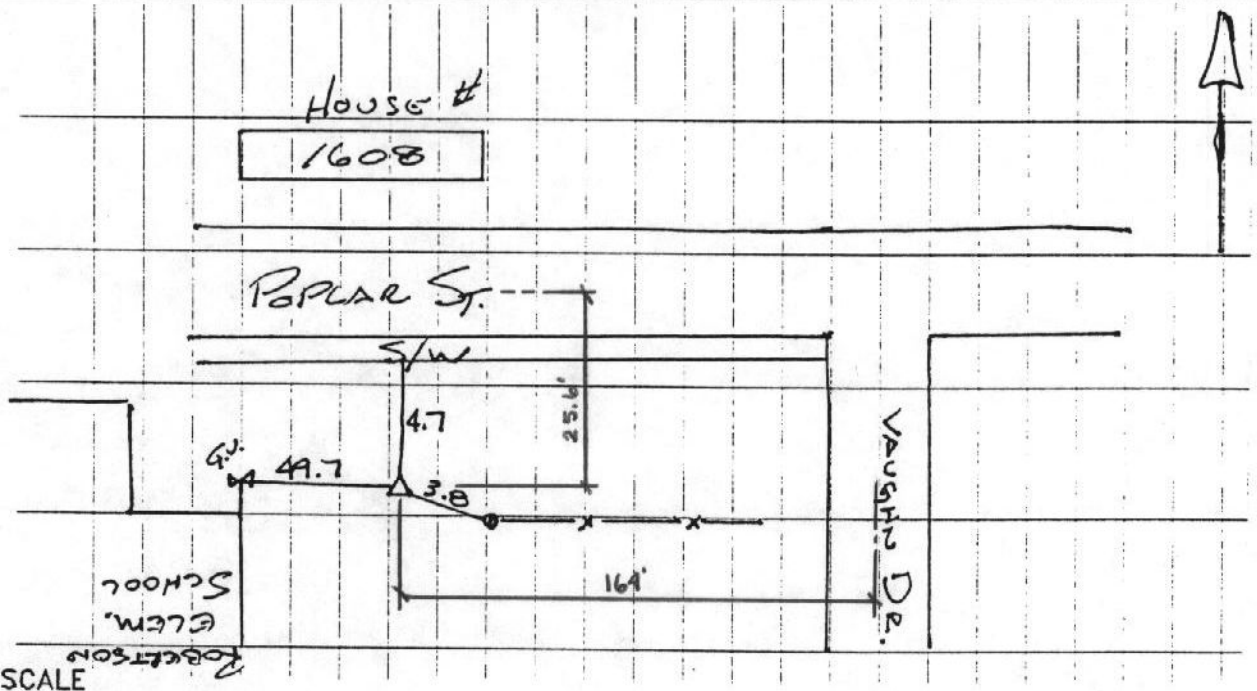
LATITUDE: N 36°36'29.04389" LONGITUDE: W 088°19'32.65948"

SCALE:

CONVERGENCE:

PLANE AZI. TO AZI. MARK:

To Reach: From the intersection of Poplar St. and Vaughn Dr., go west 0.10 miles to the station on the left.



GRW Aerial Surveys, Inc.  
801 Corporate Dr. Lexington Ky. 40503  
(606)223-3999